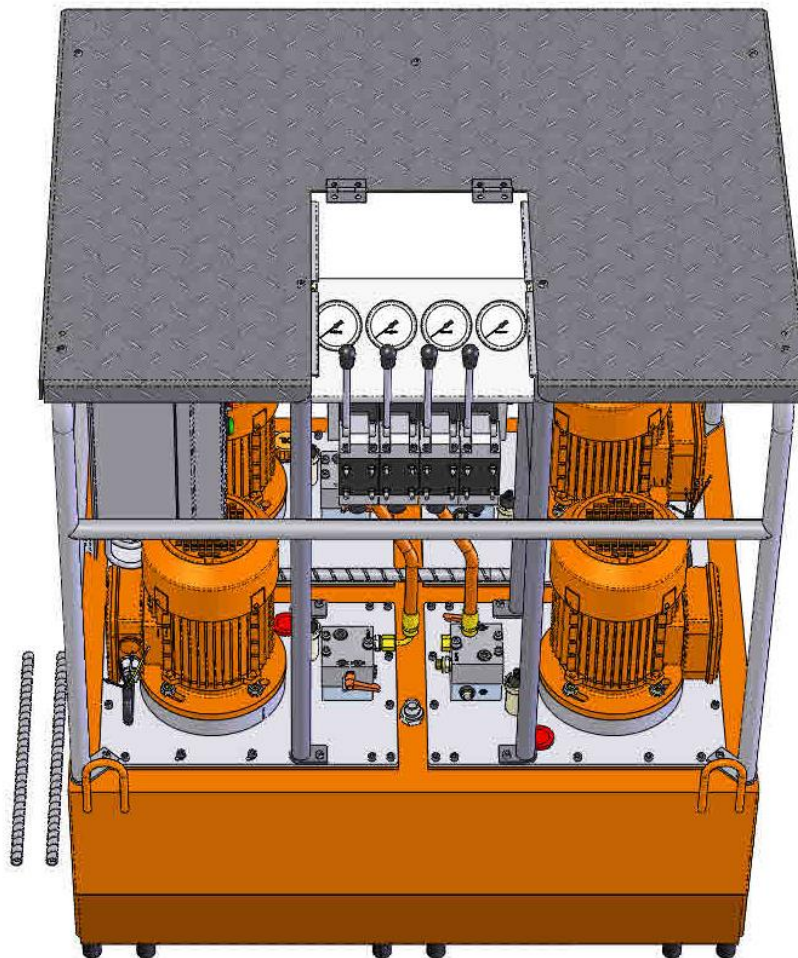


ERRATUM

On Manual : 916.219.123
Model : Pump 18Q24E_4x 4/3 Valve
Article : 100.152.229

Page 2: EN



EN

Dear customer,

This erratum describes the different operating instructions refer to the manual for 916.219.123 Vari pumps. This erratum doesn't replace the original manual and safety instructions, but is a supplement. Read all documents prior to any operation.

Scope:

This pump is developed on project basis by Holmatro Industrial Equipment. This pump is developed to move objects using holmatro skidding system. And to lift objects using holmatro cylinders.

Technical specifications:

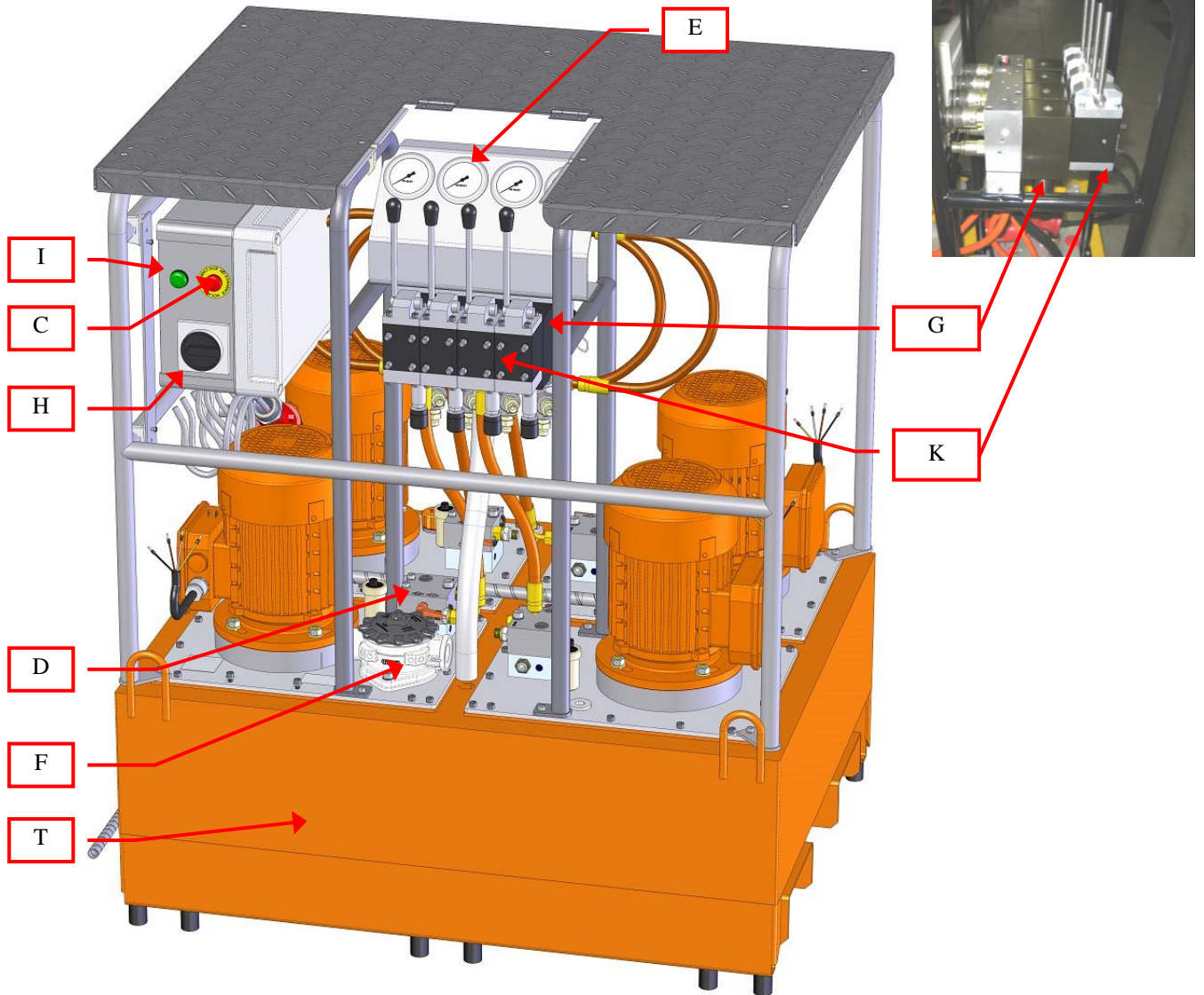
Model Type : 18Q24E_4*4_3KLEP_ACC
Artikel no. : 100.152.229

Maximale werkdruk : 720 bar
Maximale retourdruk : 720 bar
Opbrengst : 4 x 1800cc / min
Effectieve Oil content : 100 liter
Dimensions : 700*900*1300
Weight : approx. 250 kg

Important: This system must be operated by qualified personnel, which took note of this manual.

Holmatro Industrial Equipment BV shall not be liable for any consequential damages arising from (mis-) use of this set.

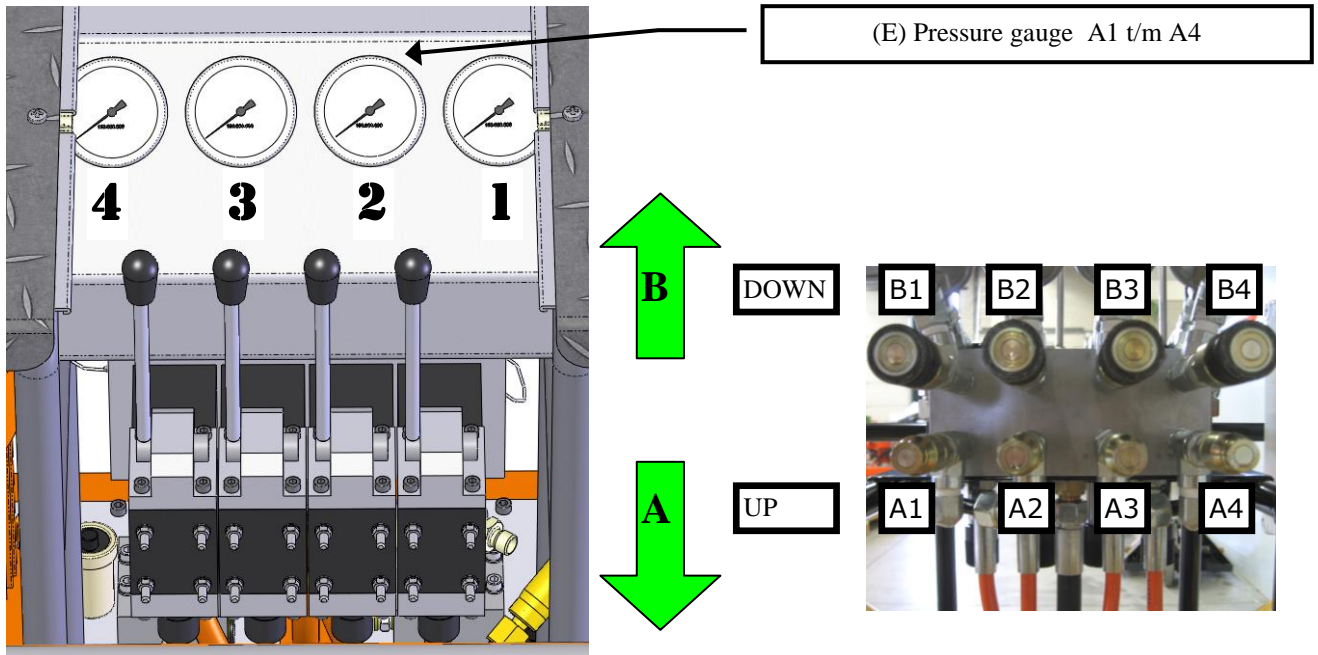
Description for the pump



Beschrijving onderdelen:

Item	Name	Function
H	Main switch	Turns power on / off.
I	switch	Engine on
C	switch	Engine off
F	Filter unit	HYDAC 0075R010BN4HC
D	Relief Valve (1,2,3,4)	Pressurise the system, lubricates bearings. DO NOT USE DURING LIFTING / LOWERING
E	Pressure gauge (A1 t/m A4)	Indicates pressure in A or B line.
G	lowering Valve	For holding and controlled lowering of the load.
K	4* 4/3 Control Valve	Valve
T	Tank	content 100 liter VG36

Manifold :



Control Valves (double acting)

The double-acting control valves in this pump are equipped with "High-Flow" connections. The pump develops oil pressure as soon as the motor runs. Any pressure developed is released to the tank if the double-acting valve is in neutral.

Startup procedure:

1. First check the following:
 - **(D)** Relief valve orange lever (4x) is closed.
 - **(H)** Main switch off
 - **(K)** valves (4x) neutral position.
2. Connect the system according to the hydraulic diagram. (page 7)
3. Connect the power source.
4. Switch on the pump, the oil flows (without pressure) through the Relief valve (D) back to the tank.
5. Switch **(D)** Relief valve orange lever (4x).
Now the oil flows through the manifold block **(K)** back to the tank.
6. Pump is ready for operation.

Simultaneous lifting:

- Make sure the system is properly connected!
- CHECK the couplers for proper connection.
- Turn the engine on.
- Pull the control levers towards you, "A" position to pump out the cylinders.
- Check if all jacks which are connected lifting their battle evenly through and check that the operating pressures remains constant (in predictable value). If this is not the case, stop the action.
- If the desired lifting step is achieved: Turn the control levers in neutral position and turn the engine off.
- Stack wooden beams under the load.

Simultaneous lowering:

- Load is hold by valves (G)
- Make sure the system and all couplers are properly connected!
- Turn the engine on, push the levers in the "B" position
- Pressure will go to 100-120 bar. Then the cilinders start lowering.
- **Check during the "lowering" process always if cylinders are sufficiently evenly decreasing and not cause any damage to the load.**
- Allow all plungers to retract fully.
- Turn the control levers in neutral and turn the engine off.
- To take all pressure from the system, Pull levers in "A" position and push levers in "B" position.

Disconnecting hydraulic couplers:

- **Turn engine off.**
- Make sure there is absolutely no pressure left before disconnecting any couplers.
- **To take all pressure from the system, Pull levers in "A" position and push levers in "B" position.**
- Verify that the gauge meters indicate no pressure.
- Now the couplers can be disconnected.
- In case there is some pressure left the couplers can not be disconnected by hand. Start procedure again.

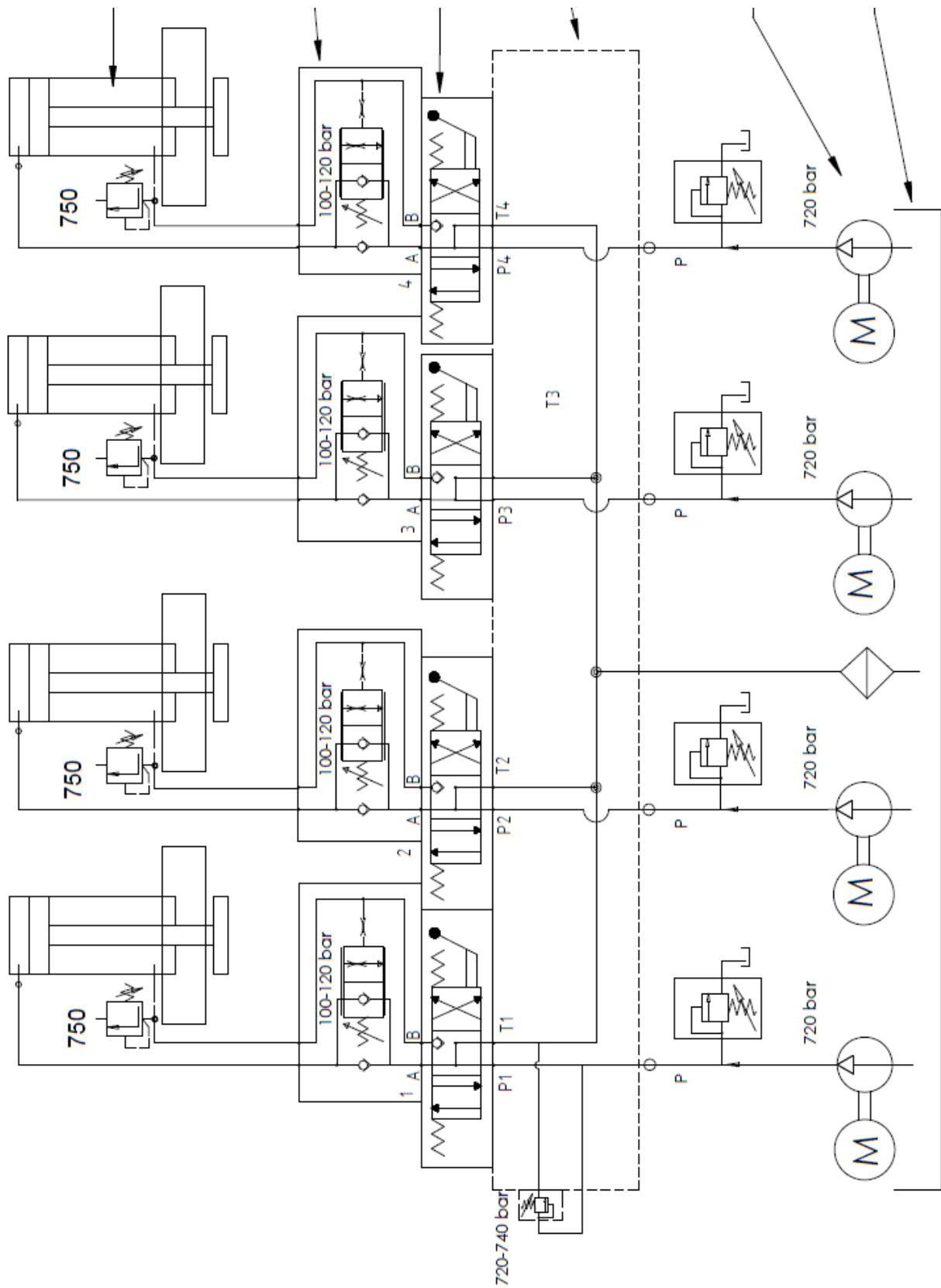
In case there are questions after reading this erratum and original manual please consult Holmatro.

Maintenance Schedule

The below maintenance schedule is based on average machine use. Depending on the intensity of use of your equipment, Holmatro can provide a specific maintenance schedule for you.

Component	Action	Time interval					
		After every use	Every 1 month or after every 10 working hours	Every 3 months or after every 25 working hours	Every 6 months or after every 50 working hours	After 100 working hours	Yearly*
General	Check, clean		x				x
Hydraulic oil	Check			x			x
Hydraulic oil	Replace						x
Hydraulic filter	Check			x			x
Hydraulic filter	Replace						x
Hydraulic couplers	Check, clean, lubricate	x					x
Dust caps	Check, clean	x					x
Hydraulic hoses	Check	x					x

*Holmatro dealer maintenance.





NL

Indien u problemen heeft met het begrijpen van dit erratum kunt u contact opnemen met uw Holmatro dealer. Ook kunt u bij uw Holmatro dealer terecht indien u dit erratum in uw eigen taal wenst te ontvangen.

GB

If you have any problems understanding this erratum, please contact your Holmatro dealer. You can also contact your Holmatro dealer if you wish to receive this erratum in your own language.

F

Si vous avez des difficultés pour comprendre cet erratum, veuillez contacter votre distributeur Holmatro. Vous pouvez également contacter votre distributeur Holmatro si vous désirez recevoir cet erratum dans votre langue.

D

Falls Sie beim Lesen dieses Erratums auf Probleme bzw. Zweifel stoßen, wenden Sie sich bitte an Ihren Holmatro-Händler. Falls Sie dieses Erratum in Ihrer eigenen Sprache wünschen, können Sie sich ebenfalls an Ihren Holmatro-Händler wenden.

E

Si tuviera algún problema a la hora de comprender esta fe de erratas, póngase en contacto con su distribuidor Holmatro. También puede ponerse en contacto con su distribuidor Holmatro si desea recibir esta fe de erratas en su propio idioma.

P

Se tiver alguma dificuldade em compreender esta errata, por favor contacte o seu representante da Holmatro. Pode também contactar o seu revendedor Holmatro se desejar receber esta errata na sua língua.

I

Se avete problemi nella comprensione di questa errata corregge, contattate il vostro rivenditore Holmatro. Potete anche contattare il vostro rivenditore Holmatro se desiderate ricevere questa errata corregge nella vostra lingua.

N

Dersom noe skulle være uklart i forbindelse med dette erratumet, ta da kontakt med din Holmatro forhandler. Du kan også ta kontakt med din Holmatro forhandler dersom du ønsker dette erratumet på ditt eget språk.

S

Om du inte förstår dessa rättelser, vänligen kontakta din Holmatro-återförsäljare. Du kan även ta kontakt med din Holmatro-återförsäljare om du vill ha dessa rättelser på ditt eget språk.

FIN

Mikäli ette ymmärrä virheellisesti painettua kohtaa, ottakaa yhteyttä Holmatro-jälleenmyyjään. Voitte ottaa yhteyttä Holmatro-jälleenmyyjään myös, jos haluatte, että tämä kohta käännetään äidinkielellenne.

DK

Hvis du har nogen form for problemer med at forstå dette erratum, kontakt da venligst din Holmatro-forhandler. Du kan også kontakte din Holmatro-forhandler, hvis du ønsker at modtage dette erratum på dit eget sprog.

PL

Jeśli zrozumienie tej erraty następuje jakiegokolwiek trudności, proszę skontaktować się z dystrybutorem sprzętu Holmatro. Można również skontaktować się z dystrybutorem Holmatro, aby otrzymać erratę w ojczystym języku.

GR

Εάν έχετε οποιαδήποτε προβλήματα για την κατανόηση αυτού λάθους παρακαλούμε να επικοινωνήσετε με τον αντιπρόσωπο της Holmatro. Μπορείτε επίσης να επικοινωνήσετε με τον αντιπρόσωπο της Holmatro εάν επιθυμείτε να λάβετε αυτό το λάθος στη δική σας γλώσσα.

EST

Kui teil on probleeme veateatest arusaamisega, kontakteeruge palun Holmatro maaletoojaga. Kui soovite saada veateadet oma emakeeles, võite samuti kontakteeruda Holmatro maaletoojaga.

H

Ha nem érti ezt a hibajegyzéket, kérjük lépjen kapcsolatba Holmatro forgalmazójával. Ha a saját nyelvén szeretné megkapni ezt a hibajegyzéket, akkor is lépjen kapcsolatba Holmatro forgalmazójával.

LV

Ja Jums rodas grūtības šīs kļūdas labojuma saprašanā, lūdzu, kontaktējieties ar savu Holmatro dīleri. Jā Jūs vēlaties saņemt šīs kļūdas labojuma aprakstu savā valodā, lūdzu, kontaktējieties ar savu Holmatro dīleri.

LT

Jeį jums sunku suprasti šį spaudos klaidų sąrašą, prašom kreiptis į jus aptarnaujantį „Holmatro“ prekybos atstovą. Jūs taip pat galite kreiptis į jus aptarnaujantį „Holmatro“ prekybos atstovą, jei pageidaujate gauti šį spaudos klaidų sąrašą, sudarytą jūsų gimtąja kalba.

SLO

Če imate težave pri razumevanju tega popravka, prosimo, kontaktirajte svojega Holmatro trgovca. Prav tako lahko kontaktirate svojega Holmatro trgovca, če želite prejeti ta popravek v svojem jeziku.

SK

Ak máte akýkoľvek problém porozumieť tejto tlačovej chybe, spojte sa so svojím dilerom Holmatro. So svojím dilerom Holmatro sa môžete spojiť, ak chcete dostať túto tlačovú chybu vo svojom jazyku.

CZ

Máte-li jakýkoli problém porozumět této tiskové chybě, spojte se se svým dealerem Holmatro. Se svým dealerem Holmatro se také můžete spojit, jestliže chcete obdržet tuto tiskovou chybu ve svém jazyce.

R

Dacă aveți probleme referitoare la înțelegerea eratei, vă rugăm să-l contactați pe dealerul dumneavoastră Holmatro. Puteți de asemenea să vă contactați dealerul Holmatro dacă doriți să primiți această erată tradusă în limba dumneavoastră.

B

Ако срещнете някакви проблеми при разбирането на приложения документ, съдържащ списък с корекции, моля свържете се с Вашия дистрибутор на Holmatro. Можете да се свържете с Вашия дистрибутор на Holmatro, ако желаете да получите приложения документ със списъка с корекциите на Вашия собствен език.